



21 BARROW HILL CRESCENT,
SHIREHAMPTON, BS11 9RD

**GOODMAN
& LILLEY**



Entrance Hall

Entrance via uPVC door into porch, radiator, electric box, door leading to lounge

Lounge

uPVC Window to front aspect, fireplace, radiator, Storage cupboard, door to stairs and door to kitchen

Kitchen

uPVC Window to rear aspect, fitted with a mixture of base and eye level units and roll top works surfaces, 4 ringed gas cooker, breakfast bar, combi boiler, stainless steel sink with mixer tap over

Dining Area

uPVC window and door to rear aspect ,radiator

First Floor landing

Access to loft space, doors leading to all rooms.

Bedroom 1

uPVC double glazed window to front aspect, radiator, fireplace, door to:

Bedroom 2

uPVC double glazed window to rear aspect, radiator door to:

Bedroom 3

uPVC double glazed window to front aspect, radiator, door.

Bathroom

uPVC double glazed window to rear aspect, Panel bath with shower over, pedestal sink, low level wc, heated chrome towel rail,

Gardens

The rear garden is a mixture of vegetables patches, artificial grass and a patio area. There is a garden shed and greenhouse

Parking

To the front of the property there is space to park two cars, steps to the front of the property and the shared alley leading to the garden.

-
- 3 Double Bedrooms
 - Onward Chain Agreed
 - Entrance Porch
 - Fantastic Transport Links
 - Off Street Parking
 - Large Garden
 - Village Location
 - Kitchen/Diner

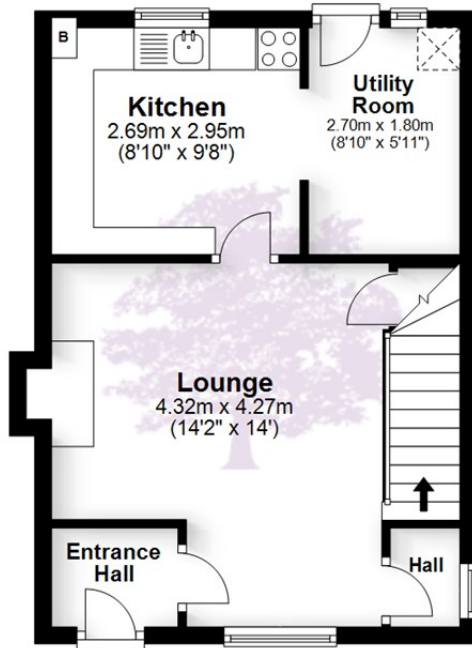


£275,000



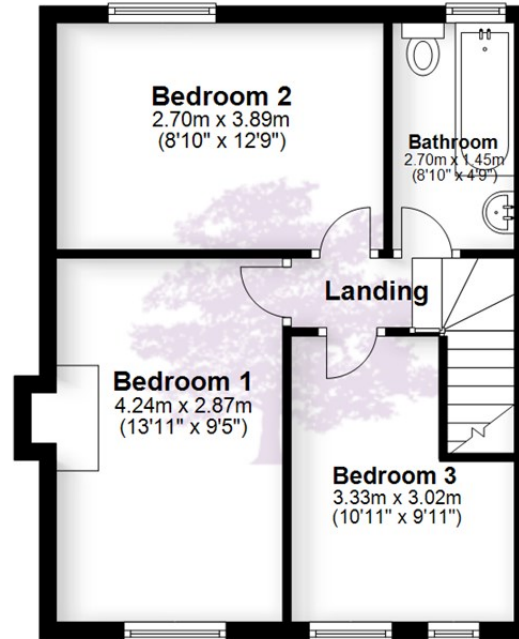
Ground Floor

Approx. 34.9 sq. metres (375.5 sq. feet)



First Floor

Approx. 40.3 sq. metres (434.3 sq. feet)



Total area: approx. 75.2 sq. metres (809.8 sq. feet)

Whilst every attempt has been made to ensure accuracy of the floor plan all measurements are approximate and no responsibility is taken for any error, omission or measurement.
Plan produced using PlanUp.

HENLEAZE - 0117 2130777
henleaze@goodmanlilley.co.uk

PORTISHEAD - 01275 430440
sales@goodmanlilley.co.uk

SHIREHAMPTON - 0117 2130333
shire@goodmanlilley.co.uk

Zoopla.co.uk

rightmove



WWW.GOODMANLILLEY.CO.UK

These particulars are for general guidance only. They do not form or constitute any part of an offer or contract. Goodman & Lilley has not carried out structural surveys of the property. The services, appliances or specific fittings mentioned in these details have not been tested. Every attempt is made to ensure accuracy, however all photographs, measurements, floor plans and distances are for illustrative purposes only. They must not be relied upon when purchasing carpets and or other fixtures & fittings. Lease details, service charges and ground rents are given as a guide only. They should be checked and confirmed by a licensed solicitor prior to exchange of contracts. The copyright of all details, photographs and floor plans remain exclusive to Goodman & Lilley.